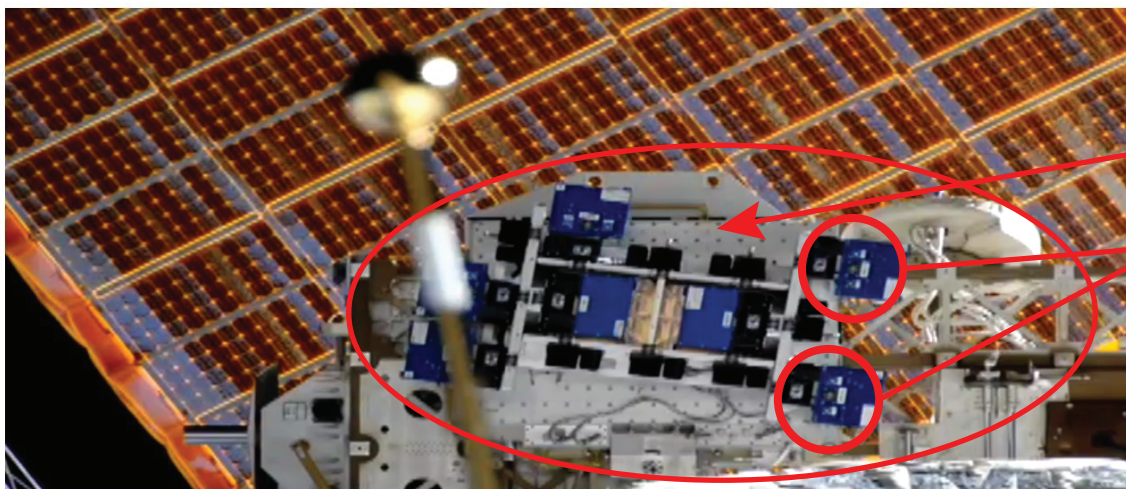


MISSE Services

LOCATION ON MISSE

Choose your ISS space environment. Each provides a different specific environment:

- Ram facing (Flight direction)
- Wake facing (Opposite Ram)
- Zenith facing (Upward)
- Nadir facing (Downward)
- Under Deck



MISSE Installed on the ISS

STANDARD SERVICES

Pre-Flight:

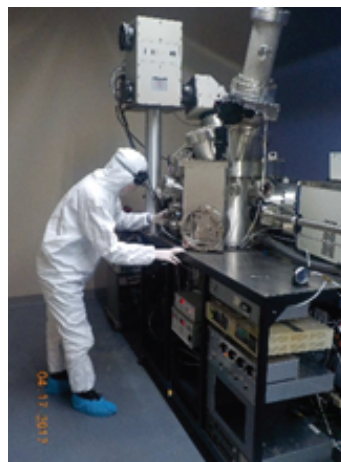
- Sample mounting design and manufacturing
- Sample integration in 10k clean room
- Environmental testing of samples at the integrated MISSE carrier level, including thermal-vac, vibration, out-gassing, off-gassing
- Integration, safety, and verification through NASA process, including safety reviews and panels
- Launch service coordination



Left: Alpha Space 10K Cleanroom

Right: Thermal-Vacuum Chamber

*Location: Alpha Space Headquarters,
Houston, Texas*



On-Orbit:

- Monthly high resolution photographs
- Real time carrier contamination deposition and thermal data collection, mapped to ISS location and attitude (roll, pitch, yaw, beta angle, and position data), collected at 1 Hz. Monthly file delivery.
- Real-time on-orbit operations control from Alpha Space Payload Operations Control Center (POCC) in Houston, Texas
- Contamination Protection (closure during contamination contributing events)



Alpha Space POCC in Houston, Texas

Return & Post-Flight:

- Return samples to earth
- De-integrate samples
- Package and return samples to client

OPTIONAL SERVICES

- Power and data for active experiments
- Additional photographs
- Additional sensors and data including radiation, UV, atomic oxygen
- Ground services including pure gas purges, special storage, and special handling
- Engineering services for payload or experiment design support
- Real time data delivered in client facility, providing maximum flexible planning and command control through a telescience client application